

5000-19 HD Barrier



Part of the

5000-19 BARRIER RANGE

Secure | Simple | Cost Effective | Easy to Use

DESCRIPTION

**THE UK'S
No1
TRIED,
TESTED
AND
TRUSTED
MANUAL
BARRIERS**



Manual Raise Arm Barriers are a low maintenance, cost effective way of manually controlling access to unauthorised or controlled areas. We offer them in spans of up to 9 Metres (Heavy Duty Model).

The pivot assembly is made of aluminium box section, the zinc plated shaft pivots on two heavy-duty stainless steel bearing blocks.

The design of the 5000-19HD incorporates a locking mechanism, allowing you to fix the barrier in the raised or lowered position prior to applying the padlock. A counter balanced fish tail weight is fine tuned for ease of operation.

The 5000-19HD comes complete with a lockable end rest, padlock and keys.

Aluminium arm, finished in either alternate red and white or alternate yellow and black vinyl hatching as standard (other colours available.)

Standard Colours: Red/White or Yellow/Black.

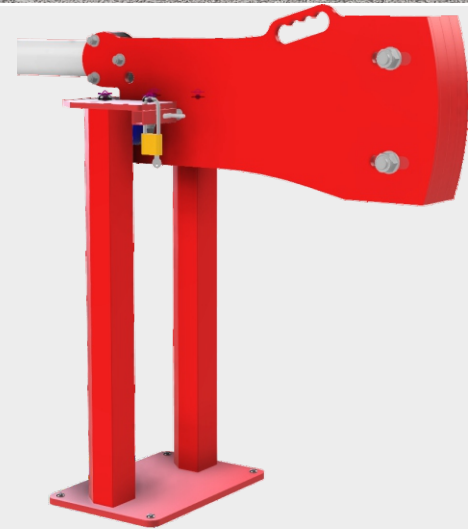
*Comes With Lockable
Adjustable End Rest*

*Easy to Use
Mechanism*

*Can be Locked
Open Or Closed
Position*

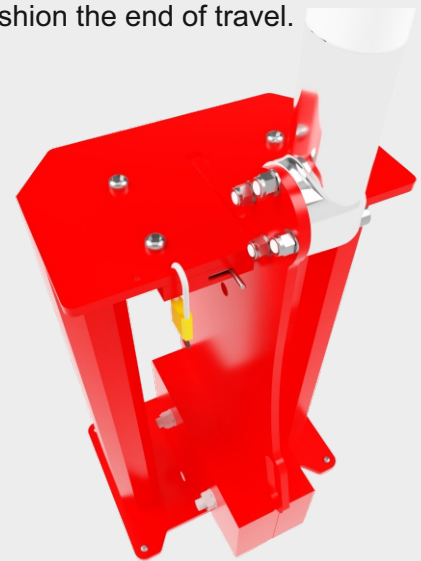
*Strong
Aluminium
Construction*

*Quick & Easy
Install*



SAFE & SECURE

As standard the manual barriers are able to be locked in the open position as well as closed. Although controlled by the user there are rubber stops to cushion the end of travel.



"INDUSTRY STANDARD"

Our manual barriers have been classed as the best in the industry. It has been designed to last using the best materials and components that we can buy.

5000-19 HD Barrier



Specification

CE Approved

Maximum Span Dimensions

9.0m plain pole only | 8.0m Bottom Skirt

Finish

Zinc Plated & Polyester Powder Coated

Material Construction

Steel & Aluminum

Counter Weights

Steel PPC Counterweights

Unit Weight

Pedestal, and pole arm: 89Kg (Exclude Counterweights)

Dimensions

Pedestal: 1110mm x 400mm x 520mm

Pole: 116mm x 82.6mm OVAL

Handing Options

Left or Right Handed (Optional)

Fixings

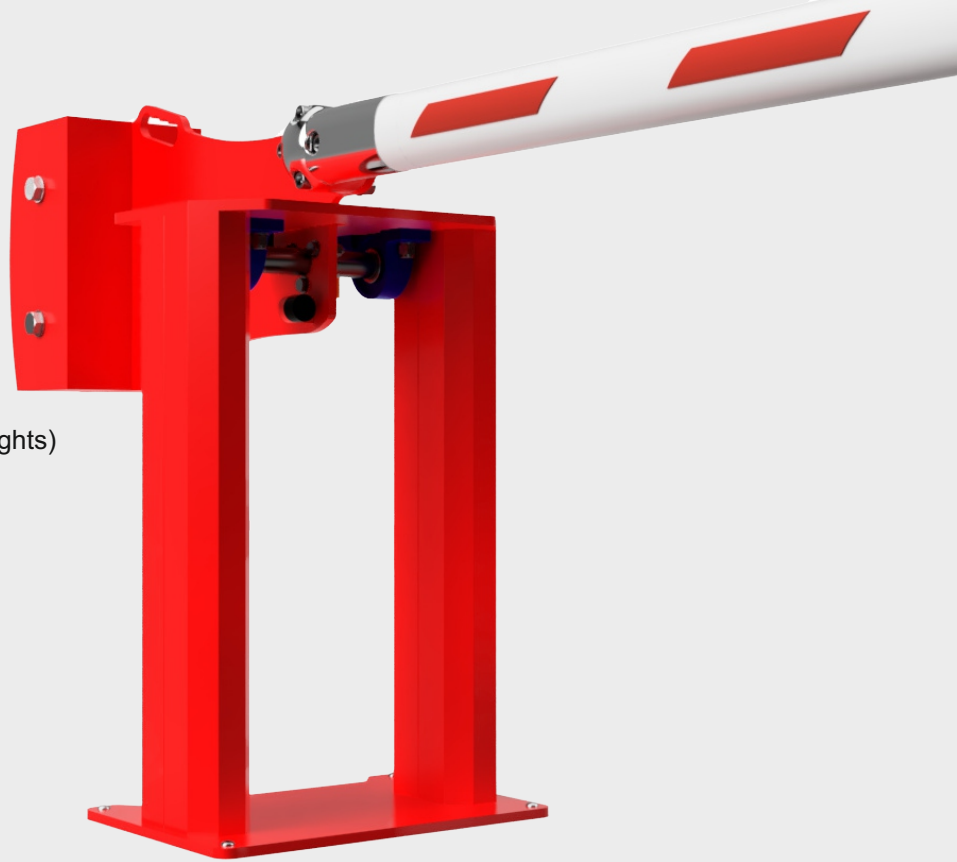
M16 anchor shield bolts included/M12 for End Rest

Skirting Options

Max 8 Metres

External Padlock

Padlock Brass 60mm Long Shackle c/w 3 Keys



POLE LENGTH MAX 9.0M (Plain Pole)

